

CERTIFICATE OF LOCATION OF GOVERNMENT CORNER

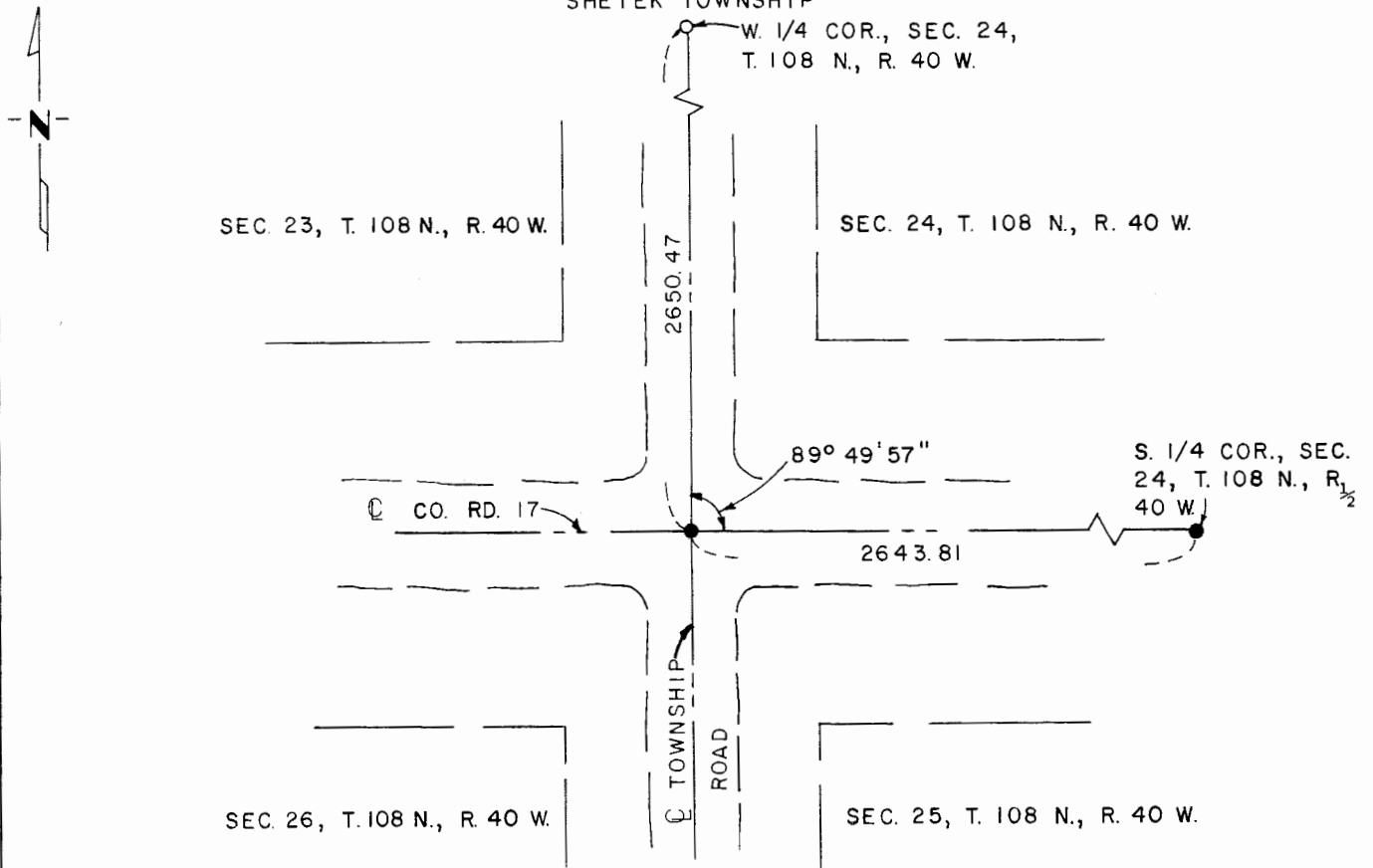
Southeast Corner of Section 23, Township 108N., Range 40W., 5th P.M.

STATE OF MINNESOTA, County of Murray

At the corner location shown on the sketch:

- On 10-30-80 found a 5/8" iron reinforcing bar per Co. record witness ties;
DATE
1.3' below grade.
 - left monument as found, lowered monument, removed monument (explain)
- On 10-30-80 placed a 1/2" iron reinforcing bar with "L.S. 12967" cap over
DATE
said 5/8" reinforcing bar.

SKETCH OF REFERENCE TIES SHETEK TOWNSHIP



I hereby certify that this document and the data contained herein was prepared by me or under my direct supervision.

[Signature]
SIGNATURE

12/28/81
DATE

Registration No. 12967

- Land Surveyor, Professional Engineer
- County Surveyor, County Engineer

OFFICE OF THE COUNTY RECORDER

County of Murray

I hereby certify that this document was filed in the Co. Recorders office at 10 A. .M. on the 18th day of February A.D., 1982

County Recorder Willard W. Ohme

By _____, Deputy

DOCUMENT NO. _____